

UPDATE...

SOFTWARE UPDATE 23.07

HJ SMARTLUBE 4.0

Update your system with the latest software for improved user experience, better system overview and added log-in security.

Improved usability and system overview

We have made several improvements to the user interface and features of our most advanced lubrication system, HJ Smartlube 4.0. The main improvements include optimization of the home screen which has been re-designed for better overview and easier access to key system parameters, as well as a new login screen for added security.

In general, the system update provides more information – where you need it. Now you can monitor actual feed rate and lubrication flow metrics for each cylinder individually. You can even see current load and vessel speed in the system. Log data can now be exported from within the system.

Recommended update for all users

We recommend this software update for your vessels using HJ Smartlube 4.0 because the engine crew will be able to work faster and smarter in the system which help you get the most out of your system.

Please contact our Aftersales department for further information and scheduling a visit by our engineer.

T: +45 9857 1911

E: technicalsupport@hjlubricators.com

Benefits:

- Easier to use
- Improved valve control
- Added log-in security
- Improved alarms

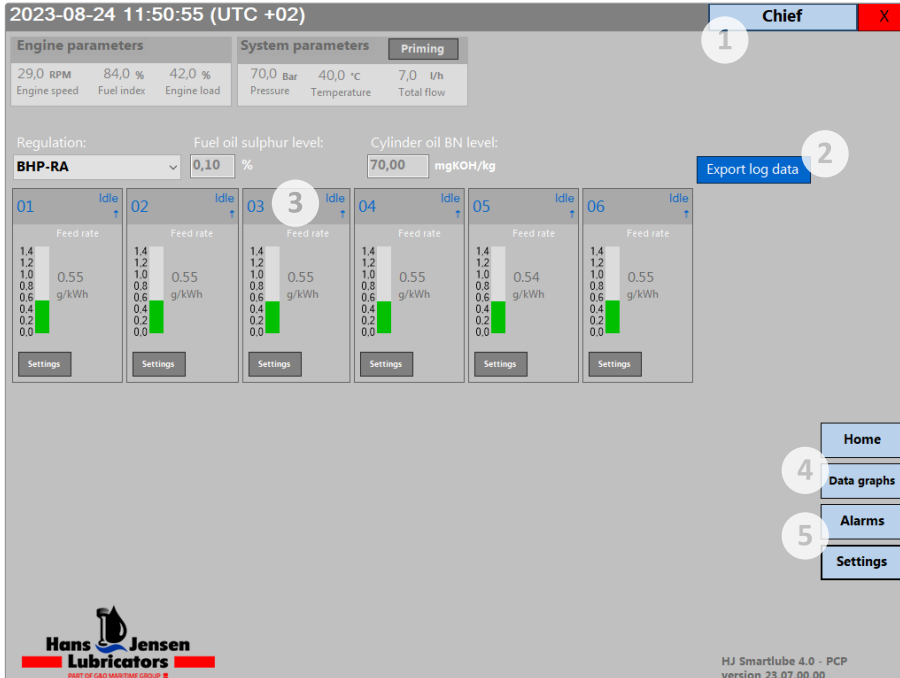
Key improvements:

- A. New user interface design
 - Manage more parameters directly from the Home screen
 - Easy access to frequently used settings
 - Naming of graph legends
 - View graphs for each cylinder
 - Better overview of engine and system parameters
- B. Improved alarm and warning features (flow alarms)
- C. User login added to user interface
- D. Improved valve control (timing/sync)
- E. Export log data
- F. Various bug fixes

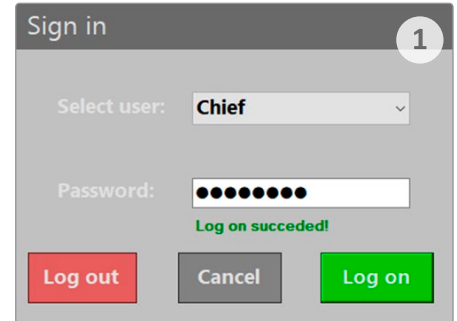
Turn the page →

Selected software features

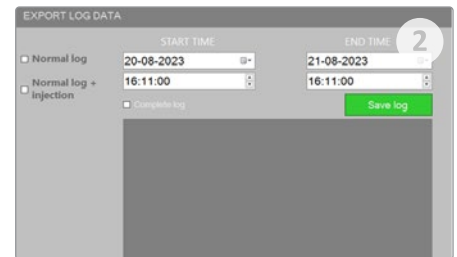
The Home screen of the Smartlube system is where you have a complete overview of all individual cylinders. From here you can easily access the various features. A new login screen will appear when accessing the system.



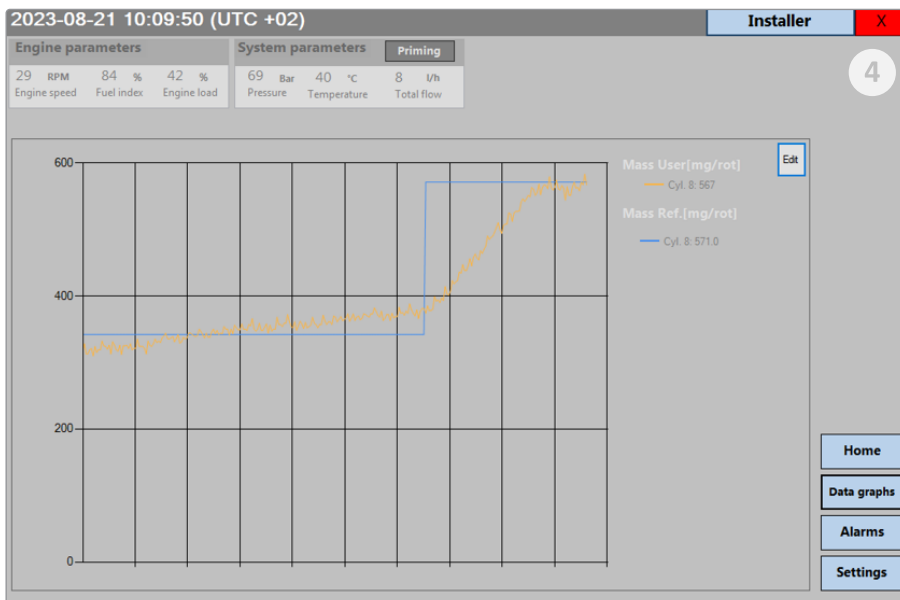
The main Home screen offers a broad overview of the system and provides easy access to various features such as graphs, alarms and settings. Engine and system parameters are also visible at the top of the screen.



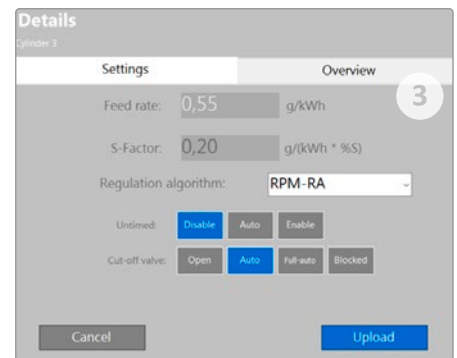
New login screen
(changing password is possible)



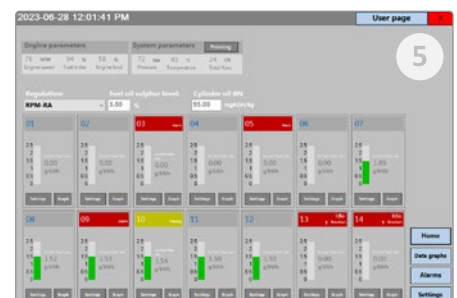
The Export Log Data is now a built-in feature that allows users to retrieve selected data or a complete log of all data.



The Data Graphs screen shows reference consumption (blue line) and actual lube oil consumption. Edit the graph by selecting the cylinders you want to see for comparing performance.



Clicking on an individual cylinder in the Home screen opens a detailed view of cylinder performance.



The Alarms screen shows all pending alarms and warnings.